



Servo-Link

PC-Software for parameter setting and programming

- Programming and parameter setting of:
 - esiMot, esiMotXL, esiMotSL, decentral servo-drive
 - SC10, servo controller
 - DSD 6, servo amplifier
 - DSK-1, DSK-2 servo amplifier compact
- Online diagnosis / 4 channel oscilloscope
- Automatic identification of the connected regulator version
- Language selection German / English
- 3 different access levels, depending on required knowledge, password protected
- Offline-programming and parameter setting in expert mode

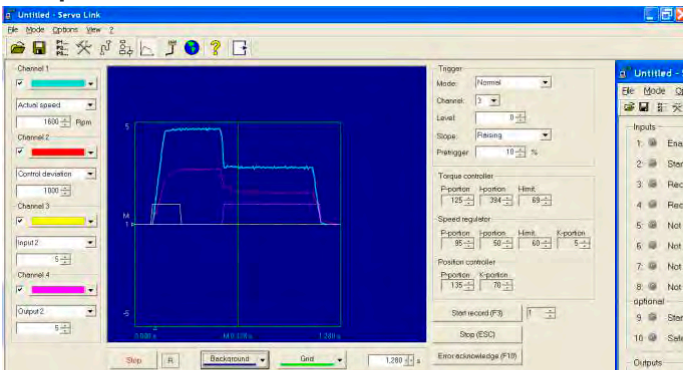
Intuitive operation



System requirements:
WINDOWS-PC
Monitor with 1024x768 pixel or better
100MB free HDD memory
RS232-Interface or USB-adaptor
CD-ROM drive
Adobe Acrobat Reader (for documentation)

Sample - Screen-shots

Oscilloscope / Online Diagnosis



The online diagnosis window provides a comprehensive overview of the servo's operational status. It includes sections for Inputs (Enable, Stop, Record selection), Actual Error (24: Enable missing), Previous Error (17: Under-voltage logic, 41: Output-stage overload, 38: Resolver error, 9: Limit switch), Speed (0 rpm), Current (0.00 A), Output-stage temperature (26 °C), Motor load (8%), Ballast load (0%), Working mode (Positioning mode), Position (1 Incr.), and Lag error (0 Incr.). A green 'ONLINE' indicator and 'Link to Regulator established (618.110.14)' are visible at the bottom.

The User-Parameter window allows for detailed configuration of the servo. Key settings include:

- Basic data: Max. speed at 100% (3000 rpm), Motor supply (24 V), Max. current (100 % of peak current), Working mode (Position control (Mode 4)), Reference run (No reference-run required).
- Response to errors: Response to stop (Ramp stop), Brake ramp (300 ms).
- Electronic axis / stepper motor simulation: Type (Clock / Direction), Sense of rotation (Inverted), Edge detection (Positive edge), Ratio (1 / 1,000).
- Limits of travel (active after reference run): Dir. of travel '+' (0 Incr), Dir. of travel '-' (0 Incr).

User-Parameter

The Online - Regulator adjustment window provides real-time control and monitoring. It features:

- Controllers: Torque controller (Position: 120, I-position: 200 1/s, I-limiter: 100 %), Speed regulator (Position: 65, I-position: 40 1/s, I-limiter: 100 %), and Position controller (Position: 300).
- Commands: Relative positioning, Execute (PC), Speed [rpm] (1500), Acceleration [m/s²] (350), Deceleration [m/s²] (450), Distance [Incr.] (18000).
- Positioning mode: Working mode (Positioning mode), Position (0 Incr.), Lag error (-1 Incr.).
- Actual Error: 0 No error, Previous Error: 17 Under-voltage logic, 11 Lag error, 16 Under-voltage motor, 1 Lag error.

Online - Regulator adjustment

Record	Command	Value 1	Value 2	Value 3	Value 4	Over time	Program end	Following record	M-Function	Tagged
1	Absolute positioning	1500	80	150	50000	0	No	With start		0
2	Relative positioning	3000	100	150	200000	1000	No	Direct after delay time		0
3	Functions					2000	No	Direct after delay time 1		0
4	Relative positioning	1000	50	50	-200000	0	No	Direct after delay time 2		0
5	Absolute positioning	1500	80	150	0	0	No	None		0
6	Empty record									
7	Empty record									
8	Empty record									
9	Empty record									
10	Empty record									
11	Empty record									
12	Empty record									
13	Empty record									
14	Empty record									
15	Empty record									

Records

Scope of delivery:

CD-content:

PC-Programm
Documentation
GSD files for Profibus
GSDML files for PROFINET
EDS files for CANopen
XML files for EtherCAT
Programming example for Step7
Programming example for TIA Portal
Tool for Firmware-Update
CAN-Library for CoDeSys

Control cabinet version:

- AKB.01 Terminal block
- Galvanic insulated USB interface converter
 - Fuse for 24V supply
 - Indicator LED for 24V
 - 3m USB cable



Art.-No.: 611.01019-8 (esiMot - series)

Cable version:

- T-Adaptor for insertion into signal cable (esiMot)
RS232 connection cable
USB interface converter



Art.-No.: 611.01019-3 (esiMot - series)



Art.-No.: 611.01019-7 (SC10-..., DSK-..., DSD-...)



Art.-No.: 630.01900-0 (USB interface converter)

Notes



All data in this brochure have an informative character without warranty of characteristics. Changes without previous announcement reserved.

esitron-electronic GmbH

Ernst-Zimmermann-Str. 18
D-88045 Friedrichshafen
Internet: www.esitron.de

Tel. +49(0)7541-6000-0
Fax +49(0)7541-6000-11
E-Mail: info@esitron.de